

Wolfen Assembly Instructions

Step 1: Print Pieces!

I used these slicing settings:

NO SUPPORTS or RAFTS!

10% Infill

0.2 mm Layer Height

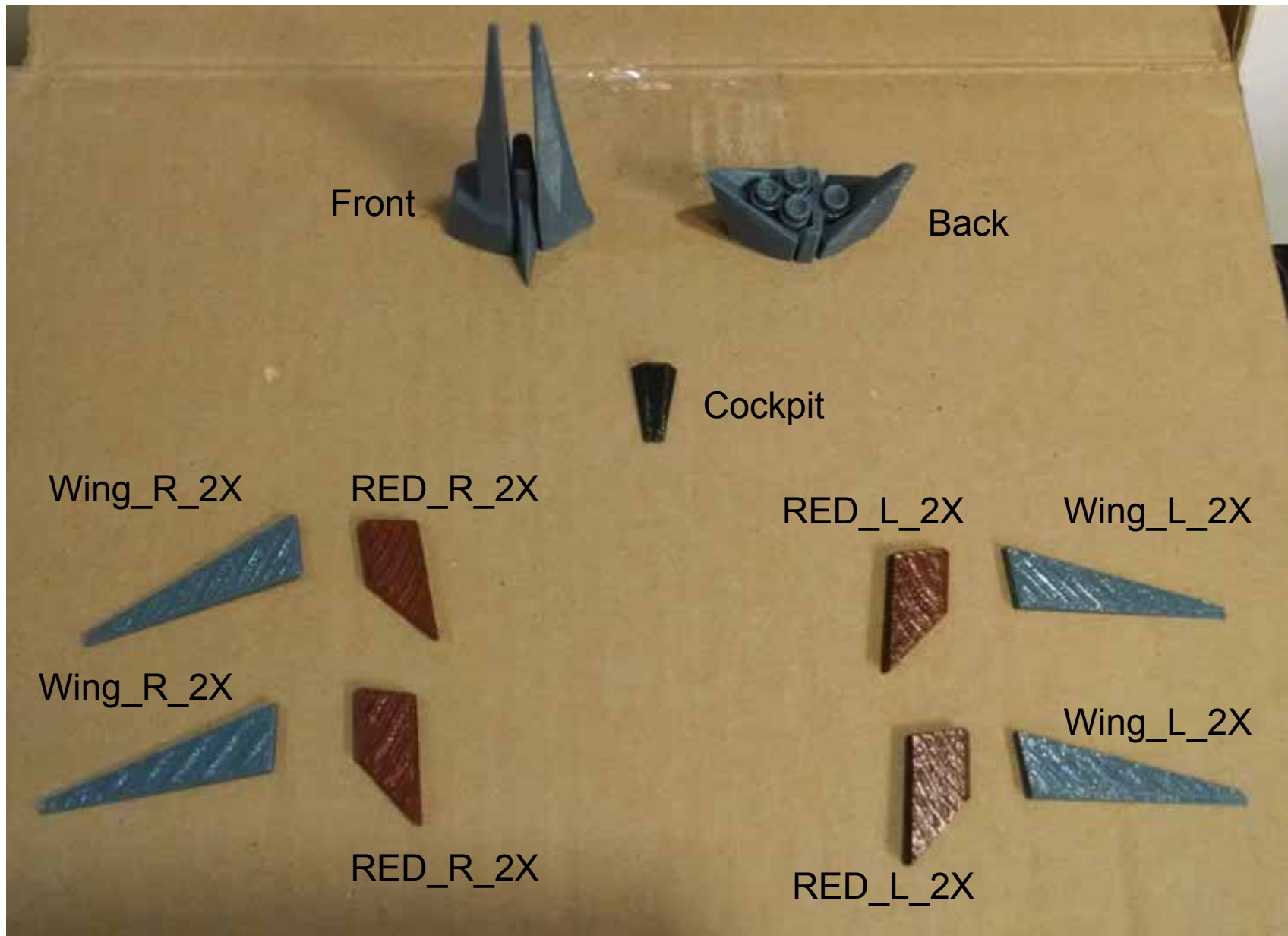
2 Shells

Printed using Black, and Grey
PLA on a Flash Forge Creator
(Then I painted some parts red)

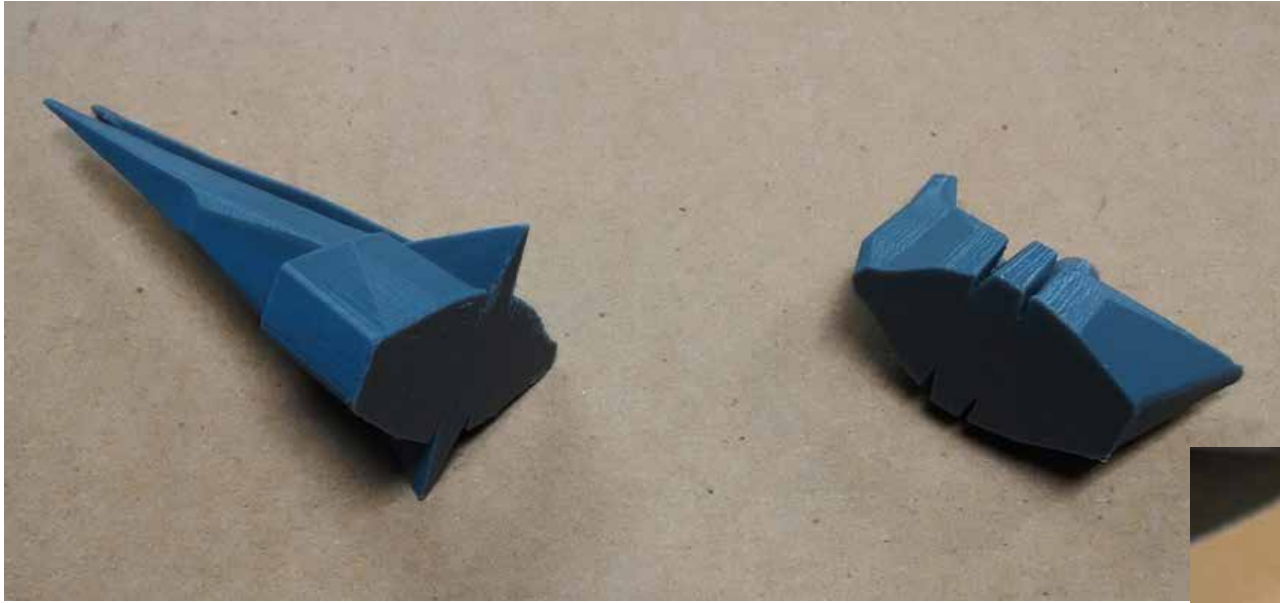
My Estimated Print Times

<i>Grey</i>	<i>Black</i>
Back = 55 mins	Cockpit = 4 mins
Front = 1 hr, 36 mins	<i>Red</i>
Wing_R_2X = 7 mins PRINT TWICE!	Red_R_2X = 7 mins PRINT TWICE!
Wing_L_2X = 7 mins PRINT TWICE!	Red_L_2X = 7 mins PRINT TWICE!

NOTE: Print files ending in "2X" twice!

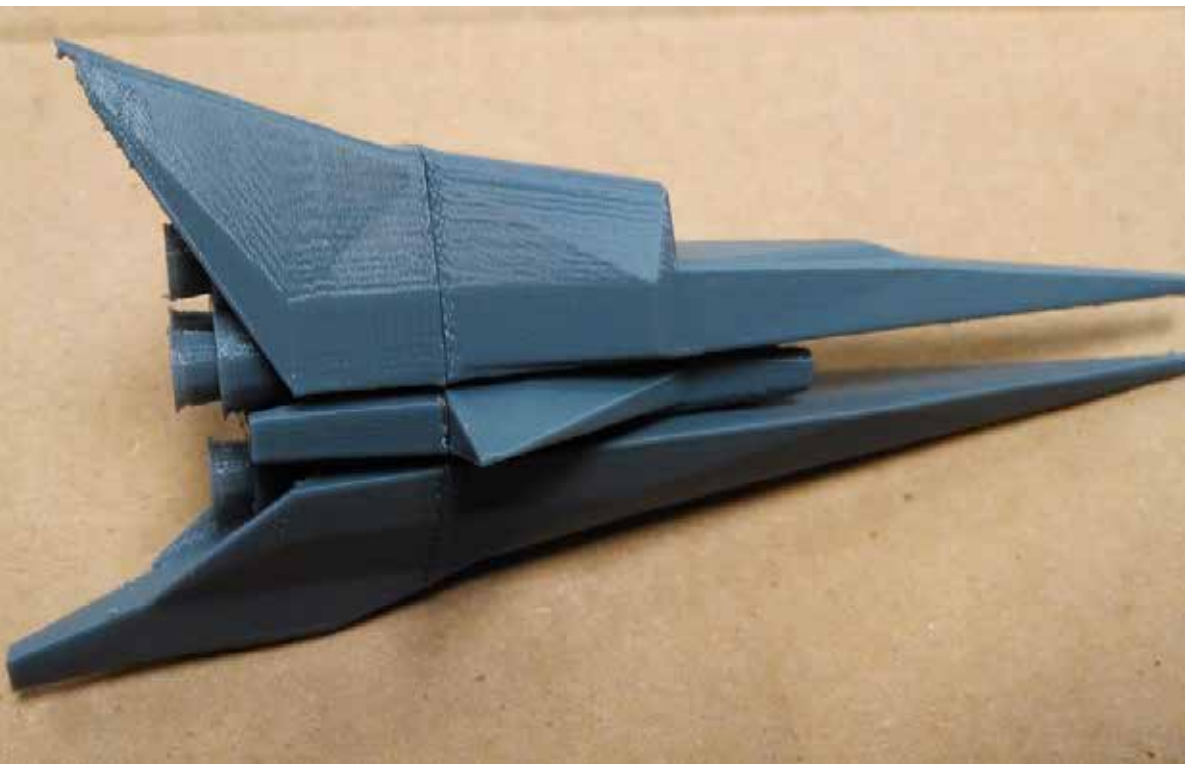


Step 2: Glue them together!

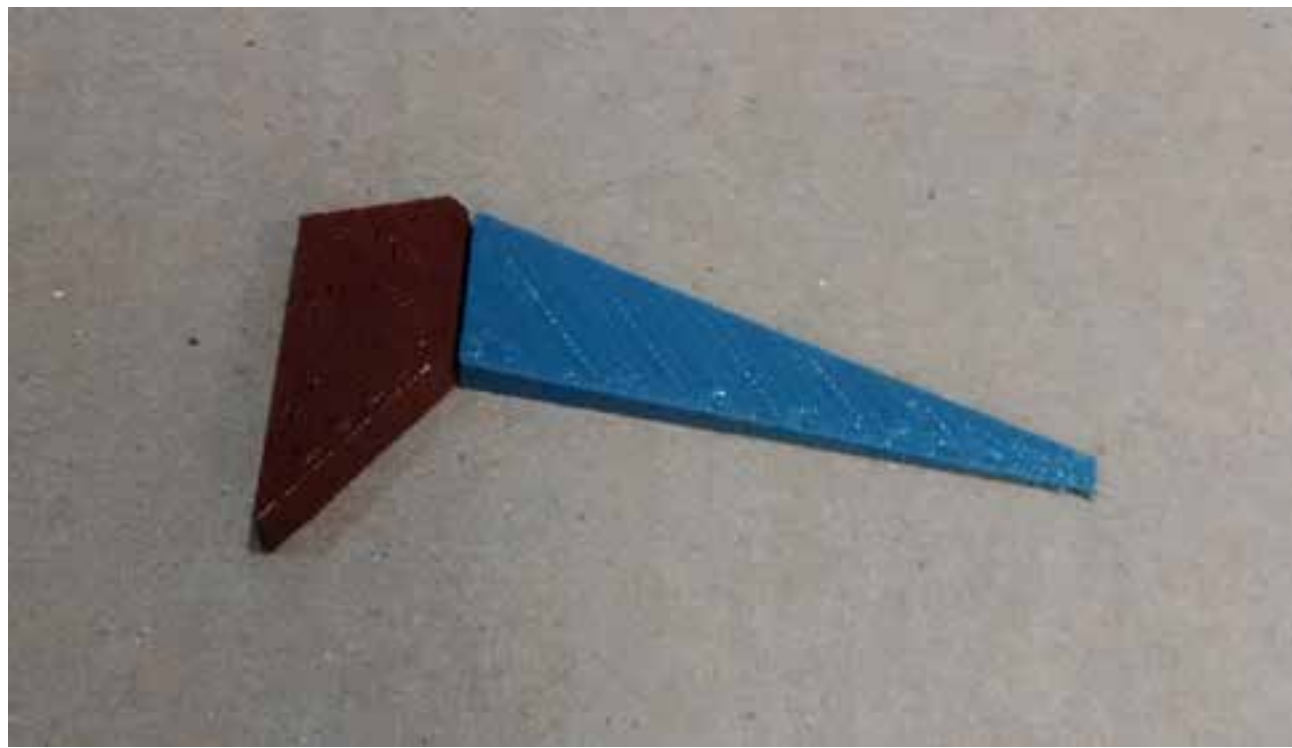


Using super glue, glue Front to Back.
Be careful to align them nicely.

I used a box to help keep it upright while the glue dried.



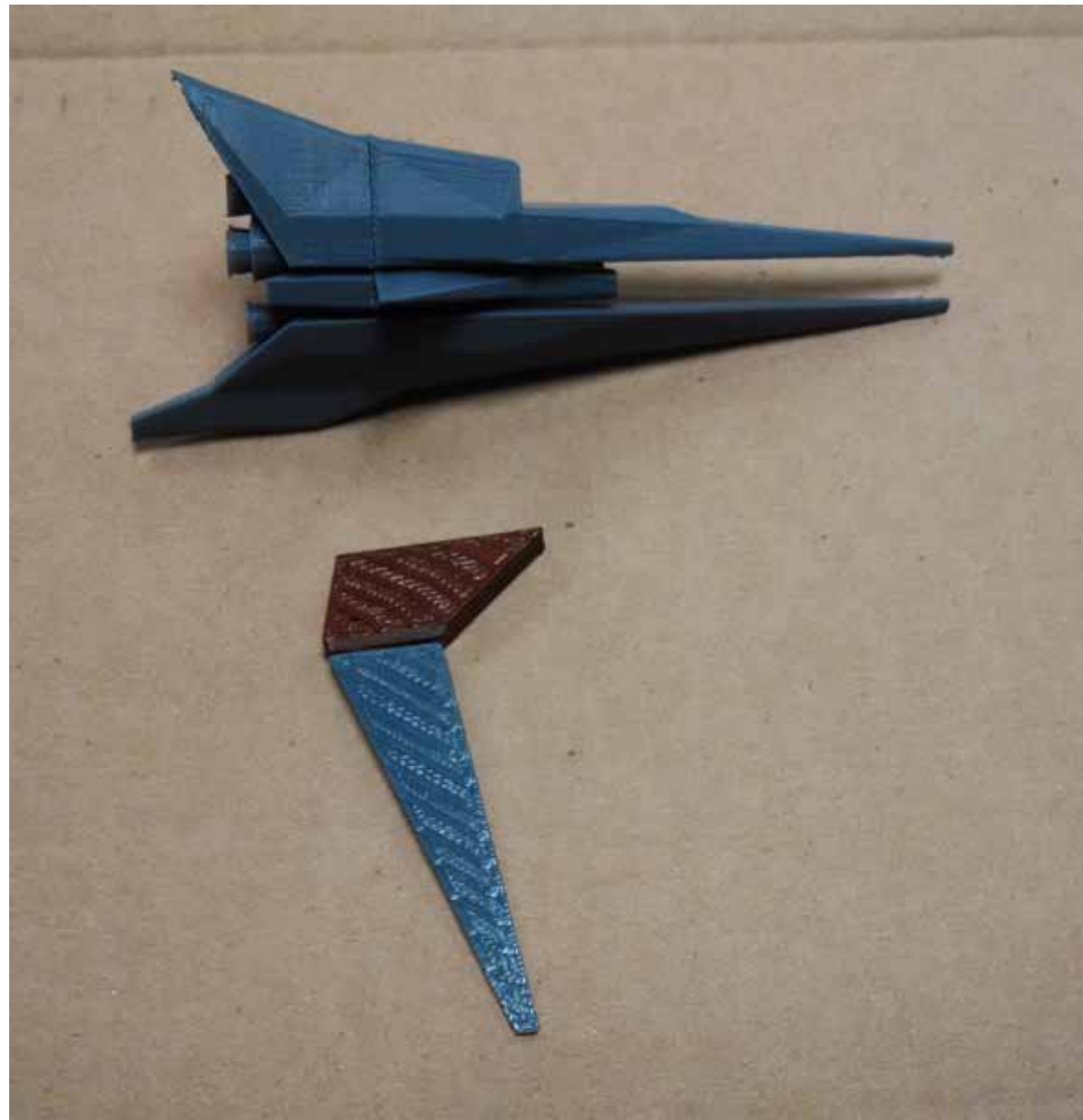
If you're a super pro at that glue game,
then it should look something like this
when the glue is dry.

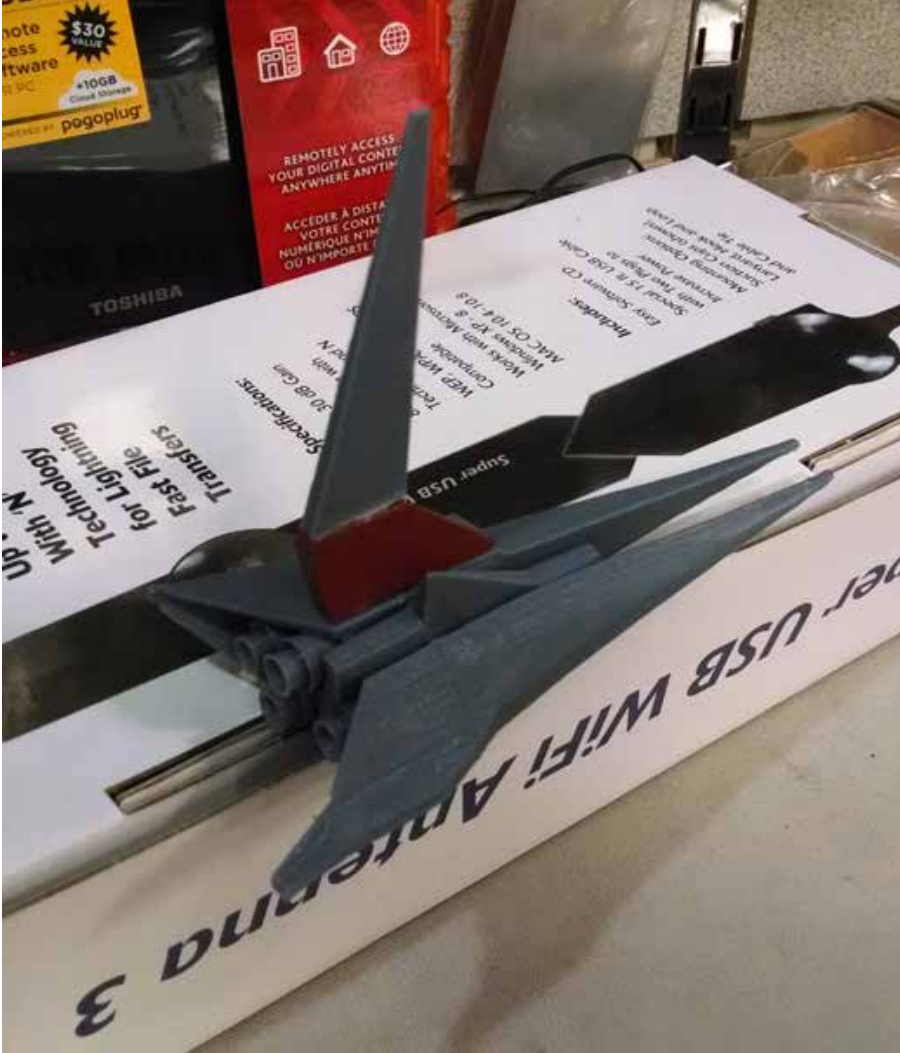


Next,
glue all the red parts to the wings
to look like this.

Oh yeah, that's nice.

When they are all good and dry,
you're gonna need to glue them to the
body of the ship. This part is really tricky
because you need to balance the ship
in the right way to keep the wings from
falling off while the glue dries.





I used the box again to help balance the ship.

Make sure to wait for each wing to dry before gluing on the next one.

Attaching the 1st wing.



Attaching the 2nd wing.



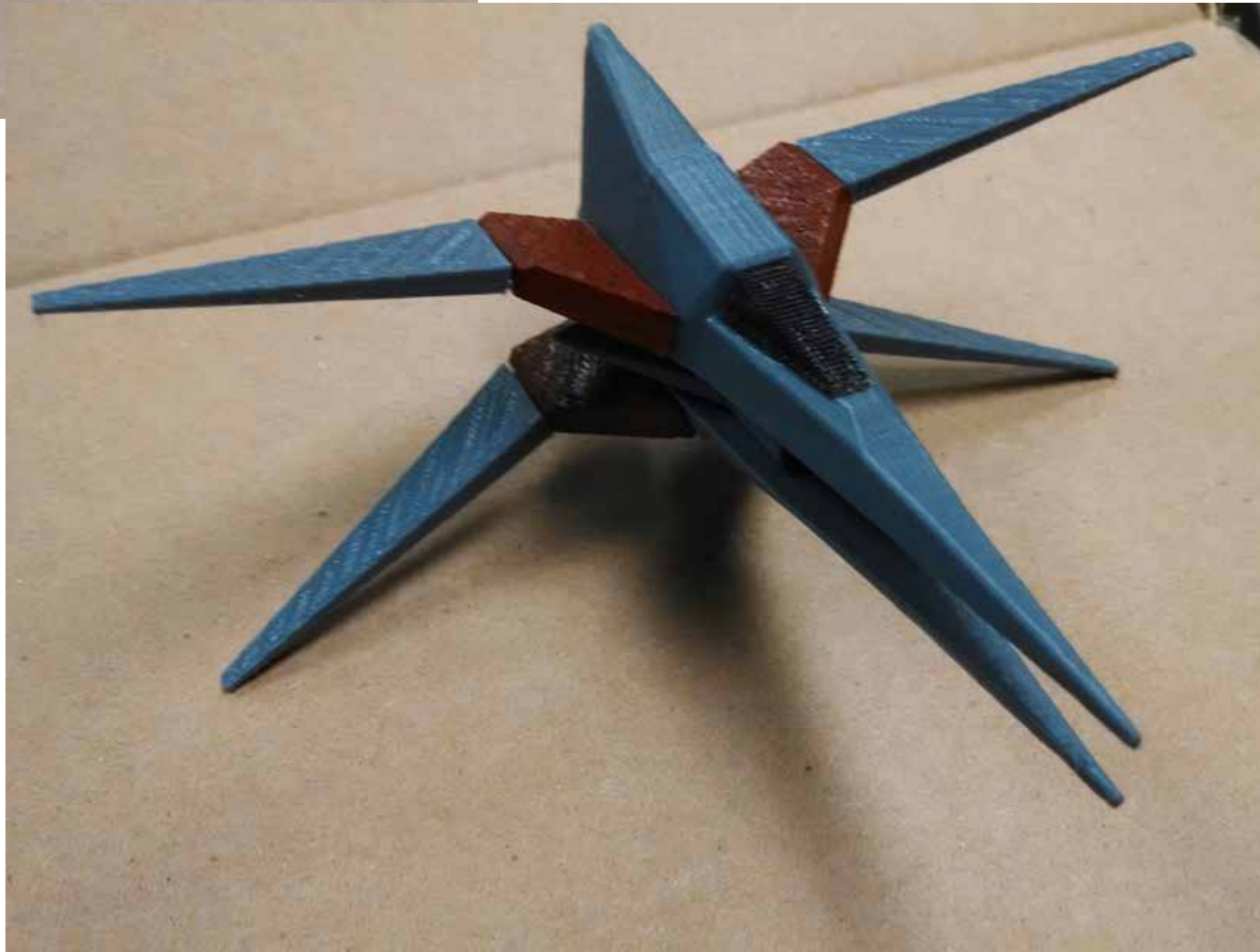
Attaching the 3rd wing.



And the final wing.



And finally, glue the cockpit in place. This is really easy.



And BAM, your Wolfen is now ready to for some awesome dog fights in space.